



BIE

INTEGRATING
RENEWABLE
ENERGY SYSTEMS
AT BUILDING
SCALE



The current European energy system mostly relies on fossil fuels, causing 80% of all the Union's greenhouse gas emissions.

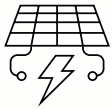
The decarbonization of the heating sector is key to reducing them and achieving climate neutrality by 2050.

THE CLUSTER

The **Building Integrated Energy** (BIE) cluster is developing innovative solutions to integrate renewable energy systems (RES) at building scale, exceeding current efficiencies.

The technologies will generate electricity, heat and cooling for multifamily, public, and commercial buildings in different climatic conditions. Solutions will integrate with users' and installers' needs.

The BIE cluster's key innovations are:



A set of comprehensive technologies including solar CPC with phase change materials, multi-source heat pumps, intelligent control systems, PV/T collectors, and systems for managing the energy use of buildings



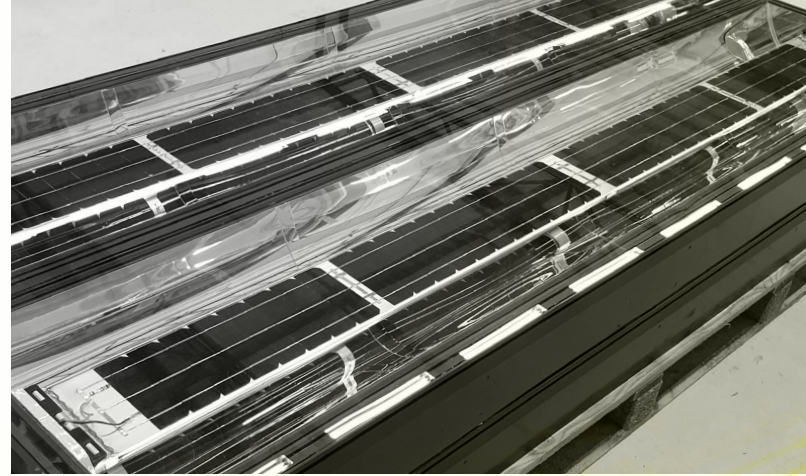
Consideration and integration of stakeholders' needs



Testing and integration of the various developed technologies



LCA analysis and market study to assess future perspectives and opportunities



DISCOVER HOW OUR TECHNOLOGIES INTEGRATE RENEWABLE ENERGY SYSTEMS AT BUILDING SCALE



BIE

INTEGRATING
RENEWABLE
ENERGY SYSTEMS
AT BUILDING SCALE



horizon2020ideas.eu



res4build.eu

This factsheet been produced by ICONS in the context of the Horizon Results Booster services delivered to IDEAS (GA 815271), RES4BUILD (GA 814865). This product does not reflect the views of the European Commission.



**HORIZON
RESULTS
BOOSTER**

An initiative
of the

